

Libralis Tuner Quick Reference

Libralis does not need installation. Just decompress the downloaded zip file in the desired folder. Please, be sure that Haptik Library 1.0 (www.haptiklibrary.org) and the device drivers are installed.

This Quick Reference briefly shows the usage of Libralis Tuner in simple configuration mode. For further details please refer to the User's Guide.

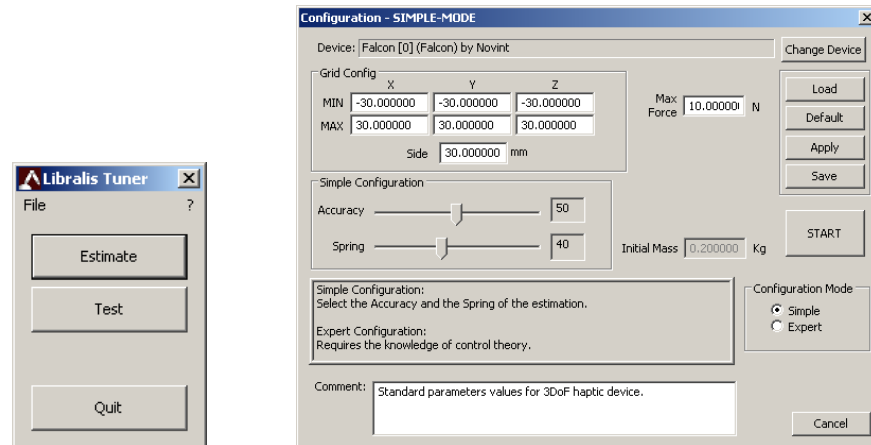


Figure 1: Left: Main Window. Right: Configuration window.

Estimate - run the offline gravity estimation (will open the Configuration Window)

Test - test a previously saved file

Load - load a parameter configuration file

Default - reload the default parameter configuration

Apply - check and apply the values

Save - check and save the parameter configuration file

Start - begin the apparent gravity estimation

Grid Config - select the grid bounding box. (For more details, please refer to the User's Guide)

Max Force - please, be careful to correctly set the maximum force of your haptic device to prevent actuator damage

Accuracy - set the estimation accuracy. Note that increasing the desired accuracy will increase also the estimation duration. (If the haptic device has low encoder resolution, it will not be able to match high levels of accuracy. This may lead the iterative estimation to get into a deadlock)

Spring - set the end-effector motion spring. (A low value means that end-effector motion would be slow and smooth, while high values will result in quick and impulsive motion, eventually causing vibration and actuator saturation)